

UNIFIED

DOOR & HARDWARE GROUP

TRANSITION TO TOUCHLESS

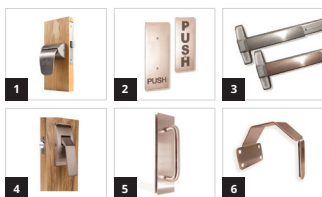
The full impact of COVID-19 remains uncertain. What is certain, though, is how to reduce its spread. In commercial buildings, that starts when you open the door.

Touchless door hardware solutions lessen contact transmission and minimize opportunities for exposure. Whether it's public restrooms, main entrances or individual offices, hands-free environments have gone from a special feature to a necessity today.

The touchless solution sets listed are just a few of the options available. Unified will work with you to determine the right touchless solutions for your building, budget and long-term goals.

Contact us at Unified.





Mechanical hardware that can be operated with a foot, elbow, wrist or other body part, so your hands can be free and clean from viruses.

ABH HANDS-FREE DOOR OPENERS

QTY.	ITEM DESCRIPTION
1	1 LR6600CN Wide Paddle
2	1 18113CN Push Plate
3	1 Clean Copper Adhesive
4	1 6800QCN Quiet Slim Paddle
5	1 18111CN Pull and Push Set
6	1 AP100CN Arm Pull

ROCKWOOD

Reduce skin-to-surface touchpoints with Rockwood hands-free door pulls. Rockwood arm and foot pulls are easy, cost-effective options for hands-free door operation in new and pre-existing aluminum, metal or wood openings, such as entrances, corridors and restrooms.

ROCKWOOD HANDS-FREE DOOR OPENERS

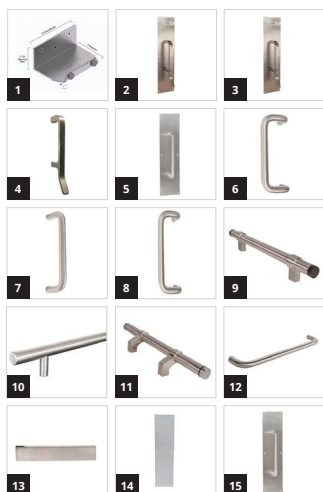


QTY.	ITEM DESCRIPTION
1	1 Rockwood FP1230 Foot Pull
2	1 Rockwood AP1140 Arm Pull
3	1 Rockwood AP1141 Arm Pull
4	1 Rockwood AP1007 Arm Pull with Plate
5	1 Rockwood 193 Hand/Arm Pull



Trimco's Healthy Hardware further protects against infectious germs, thanks to the CuVerro copper nickel alloys that actively kill bacteria.

TRIMCO HEALTHY HARDWARE PUSH/PULL PLATES, GRIPS, BARS, AND LEVERS



QTY.	ITEM DESCRIPTION
1	1 UFP - Trimco Ultimate Foot Pull
2	1 1035-1 - Trimco Healthy Hardware Ultimate Restroom Pull with Plate 3" x 12"
3	1 1835-3 - Trimco Healthy Hardware Ultimate Restroom Pull 4" x 16"
4	1 1135 Series - Trimco Healthy Hardware ADA Compliant Ultimate Restroom Pulls
5	1 1017-2 - Trimco Healthy Hardware Heavy Duty Pull Plate 3-1/2' x 15' - 6" CTC
6	1 1191-3 - Trimco Healthy Hardware Offset Grips 10" CTC
7	1 AP121 - Trimco Healthy Hardware 1" Diameter Round Straight Bent Pull
8	1 AP221 - Trimco Healthy Hardware 1" Diameter Round Offset Bent Pull
9	1 AP311 - Trimco Healthy Hardware 1-1/4" Diameter Adjustable Pull
10	1 AP411 - Trimco Healthy Hardware Architectural Ladder Pulls, 1" Diameter (multiple styles available)
11	1 1185 - Trimco Healthy Hardware Series Pull
12	1 1745 Series - Push/Pull Bar
13	1 PBT 8000 - Push Pad Cover
14	1 1001-1 - Trimco Healthy Hardware Heavy Duty Push Plates 3" x 12"
15	1 1017-2 - Trimco Heavy Duty Pull Plates 3-1/2" x 15"



Unified Door & Hardware Group can help you transition to touchless and build confidence in public spaces again. We can recommend solutions to match your specs — whether retrofit or all new hardware.

COMMERCIAL HARDWARE | CUSTOM ENGINEERED OPENINGS
EJ ENTERPRISES | HALPERN | HUDSON VALLEY DOOR & HARDWARE
LIBERTY DOOR SYSTEMS | NEW DOOR INSTALLATION
NEXT DOOR DISTRIBUTION | PREVENT SECURITY & TECHNOLOGY
TRU-FIT | WEINSTEIN & HOLTZMAN